
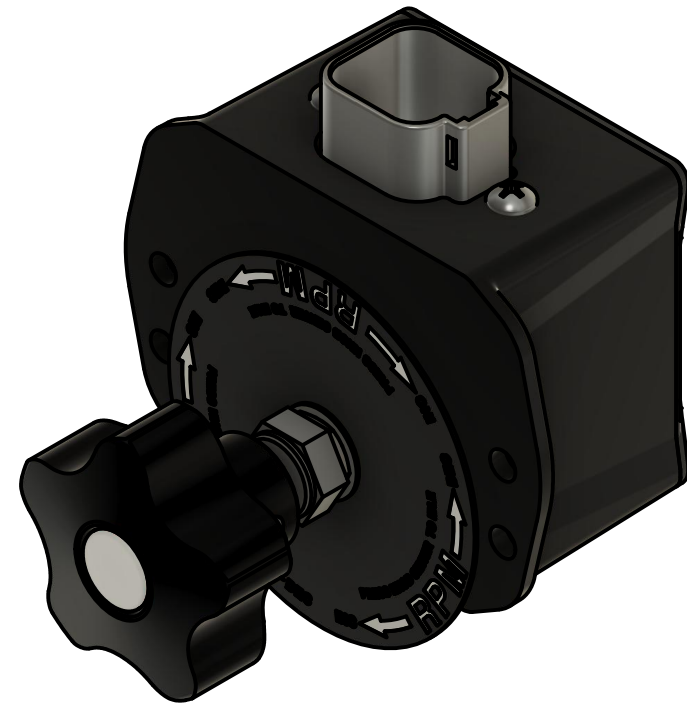


**SECTION A-A  
SCALE 1:1**

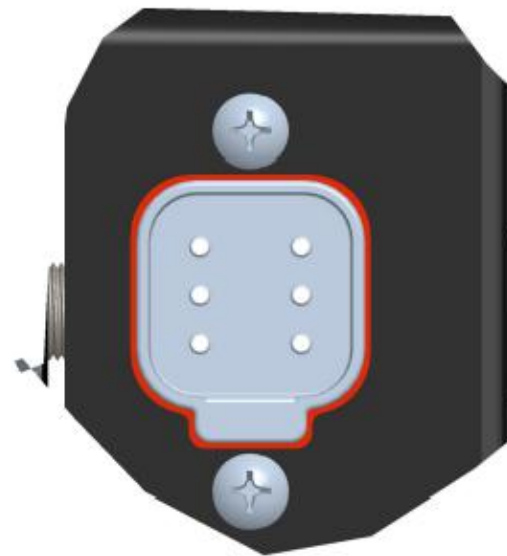
TOLERANCES ON DIMENSIONS UNLESS OTHERWISE SPECIFIED		 WWW.MURCAL.COM (661) 272-4700			
DECIMAL PLACE TOLERANCES	0.0 = ±0.060			NEXT ASS'Y:	
	0.00 = ±0.030			DESCRIPTION: THROTTLE CONTROL, J1939 WITH DT13-6P 90	
ANGLES:	XX = ±0.5°	MATERIAL: REFERENCE BILL OF MATERIAL			
DRAWING UNITS UNLESS SPECIFIED: INCHES		STATUS: RELEASED			
DRAWN BY: KLD	DATE: 06-Jan-21	DRAWING NUMBER: CT-327			
CHECKED BY:	DATE:	REV: -			
MODEL: CT	CONFIGURATION: 327	SHEET: 1/2			

REV:	DATE:	BY:	DESCRIPTION:

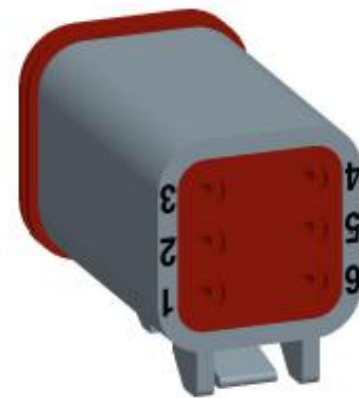


CT-327 INPUT/OUTPUT OPTIONS		
PVC 7550-100 REV V1.0		
PIN	DEFAULT	"A" CONNECTOR OPTIONS
1	B+ IN	8 - 32 VDC
2	CAN H	J1939
3	CAN L	J1939
4	DI - 1	None
5	DI - 2	None
6	GND	None


KEY	
DI	Digital Input Low/High, V Batt wetting current, close to GROUND



**DETAIL A**  
DT13-6P (ENCLOSURE)



**DT06-6S PLUG, W-6S WEDGE**  
0462-201-16141 SOCKET, 16-20 AWG  
114017 PLUG (UNUSED TERMINALS)

TOLERANCES ON DIMENSIONS UNLESS OTHERWISE SPECIFIED		 WWW.MURCAL.COM (661) 272-4700	
DECIMAL PLACE TOLERANCES	0.0 = ±0.060		
	0.00 = ±0.030	DESCRIPTION: THROTTLE CONTROL, J1939 WITH DT13-6P 90	
ANGLES:	XX = ±0.5°	DRAWING UNITS UNLESS SPECIFIED: INCHES	
DRAWN BY: KLD	DATE: 06-Jan-21	MATERIAL: REFERENCE BILL OF MATERIAL	
CHECKED BY:	DATE:	STATUS: RELEASED	
MODEL: CT		DRAWING NUMBER:	REV:
CONFIGURATION: 327		SHEET: 2/2	CT-327 -

REV:	DATE:	BY:	DESCRIPTION: